



Air Pollution Control Program Updates

Part 3

Josh Vander Veen, Air Quality Analysis Section Chief

REGFORM

Missouri Air Compliance Seminar

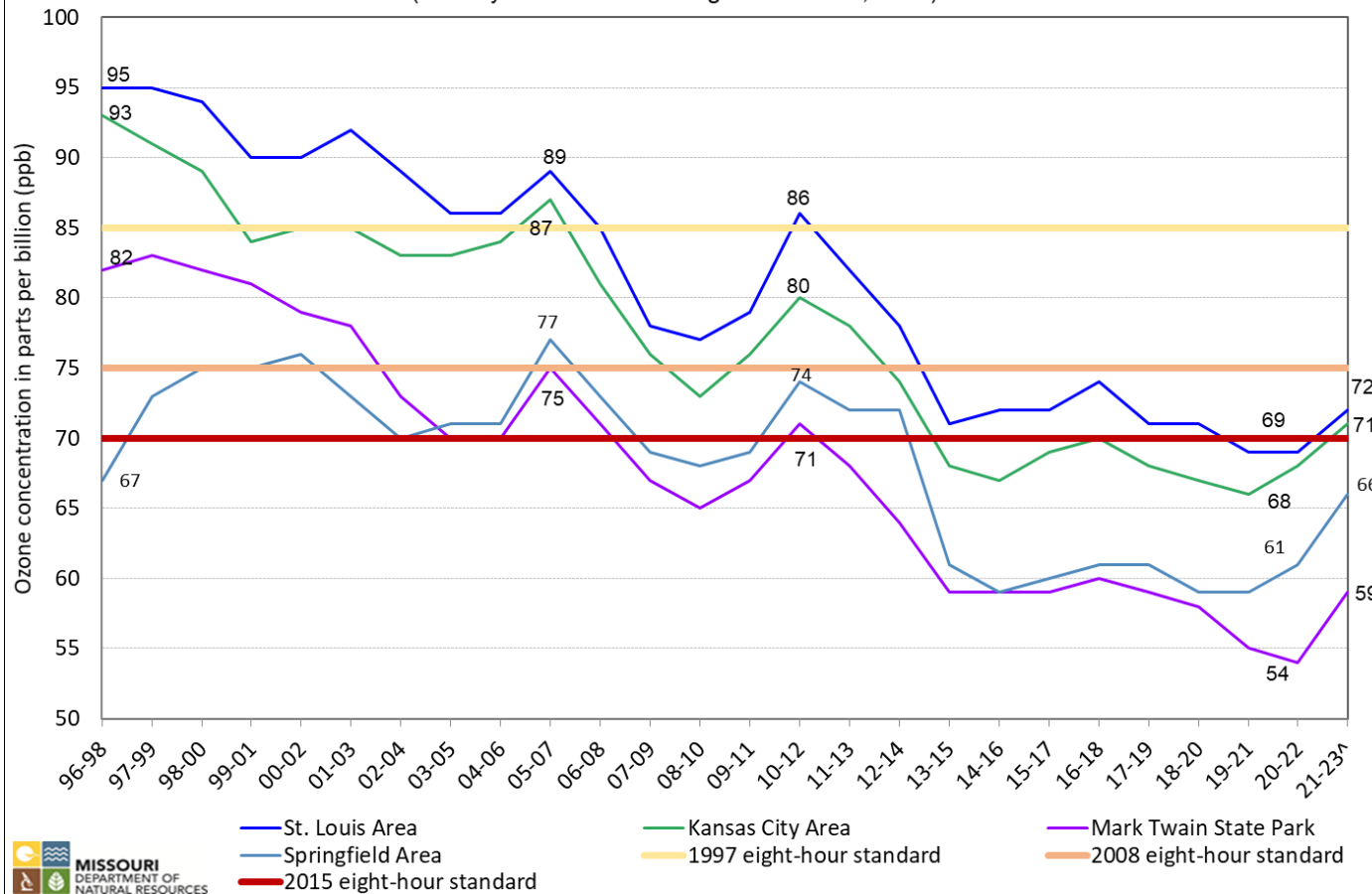
November 8, 2023

2023 Ozone Season & Exceptional Events Analysis

Ozone Trends

Trends in Eight-hour Ozone Design Values
St. Louis, Kansas City, and Springfield Areas and Rural Site (Mark Twain)

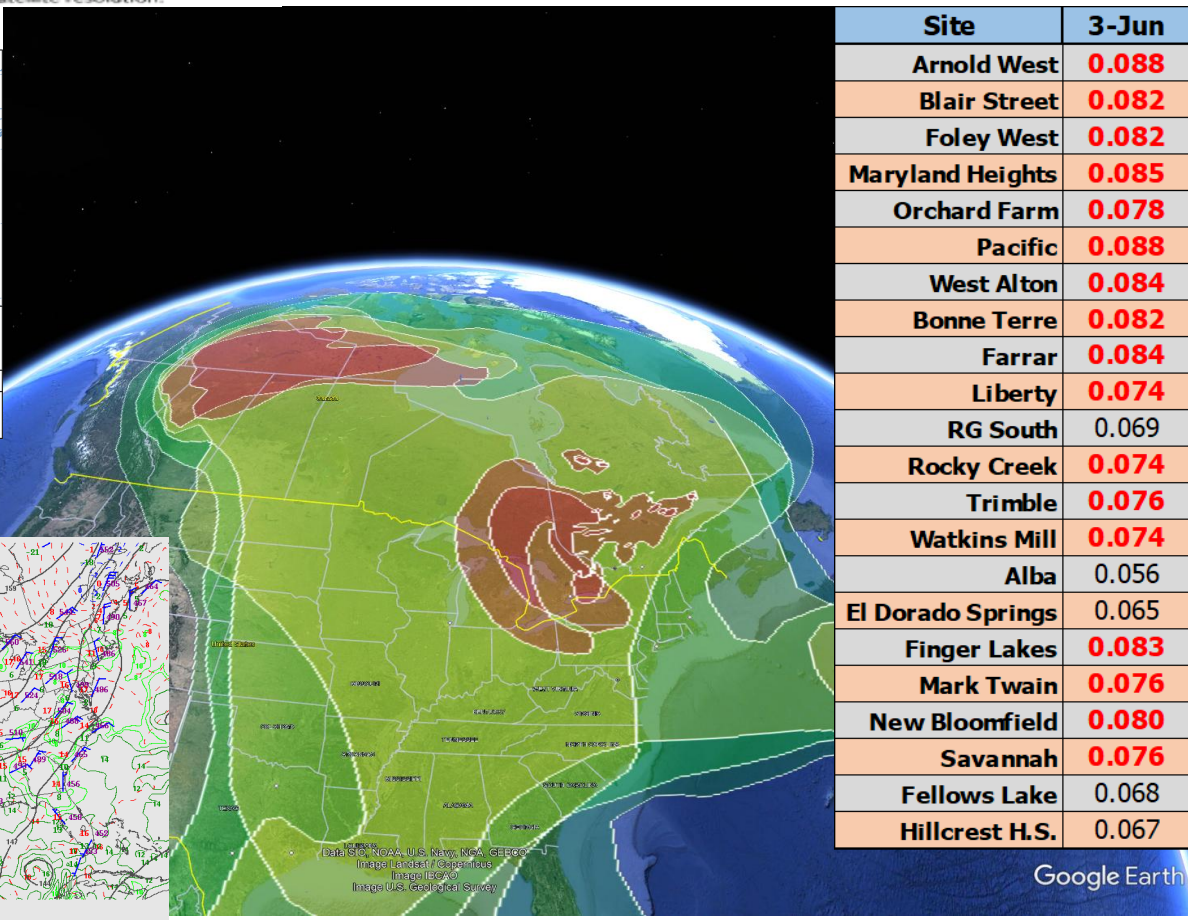
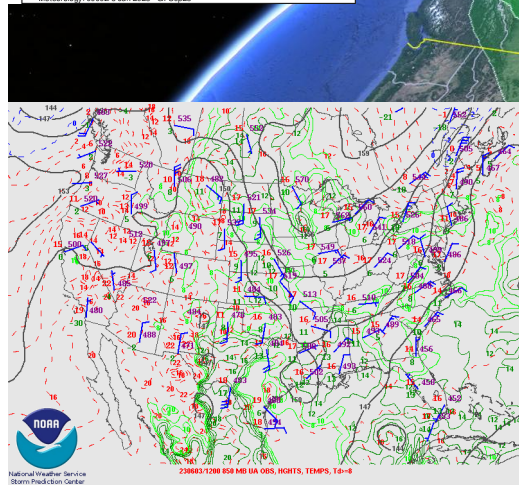
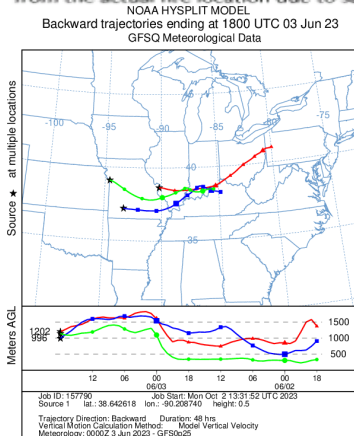
(*Quality Assured data through October 31, 2022)



2023 Ozone Season & Exceptional Events Analysis

Fire Points
 Smoke: ■ Light ■ Medium ■ Heavy

Disclaimer: The location of the fires displayed may be slightly offset from the actual fire location due to satellite resolution.



Preliminary O₃ Concentrations

| Site | 3-Jun |
|-------------------|-------|
| Arnold West | 0.088 |
| Blair Street | 0.082 |
| Foley West | 0.082 |
| Maryland Heights | 0.085 |
| Orchard Farm | 0.078 |
| Pacific | 0.088 |
| West Alton | 0.084 |
| Bonne Terre | 0.082 |
| Farrar | 0.084 |
| Liberty | 0.074 |
| RG South | 0.069 |
| Rocky Creek | 0.074 |
| Trimble | 0.076 |
| Watkins Mill | 0.074 |
| Alba | 0.056 |
| El Dorado Springs | 0.065 |
| Finger Lakes | 0.083 |
| Mark Twain | 0.076 |
| New Bloomfield | 0.080 |
| Savannah | 0.076 |
| Fellows Lake | 0.068 |
| Hillcrest H.S. | 0.067 |

PM_{2.5} NAAQS Reconsideration

PM_{2.5} NAAQS Reconsideration

- PM_{2.5} Proposal Imminent -EPA Policy Assessment suggests:

- Annual Standard (currently 12 $\mu\text{g}/\text{m}^3$)

potential range: 8 - 10 $\mu\text{g}/\text{m}^3$

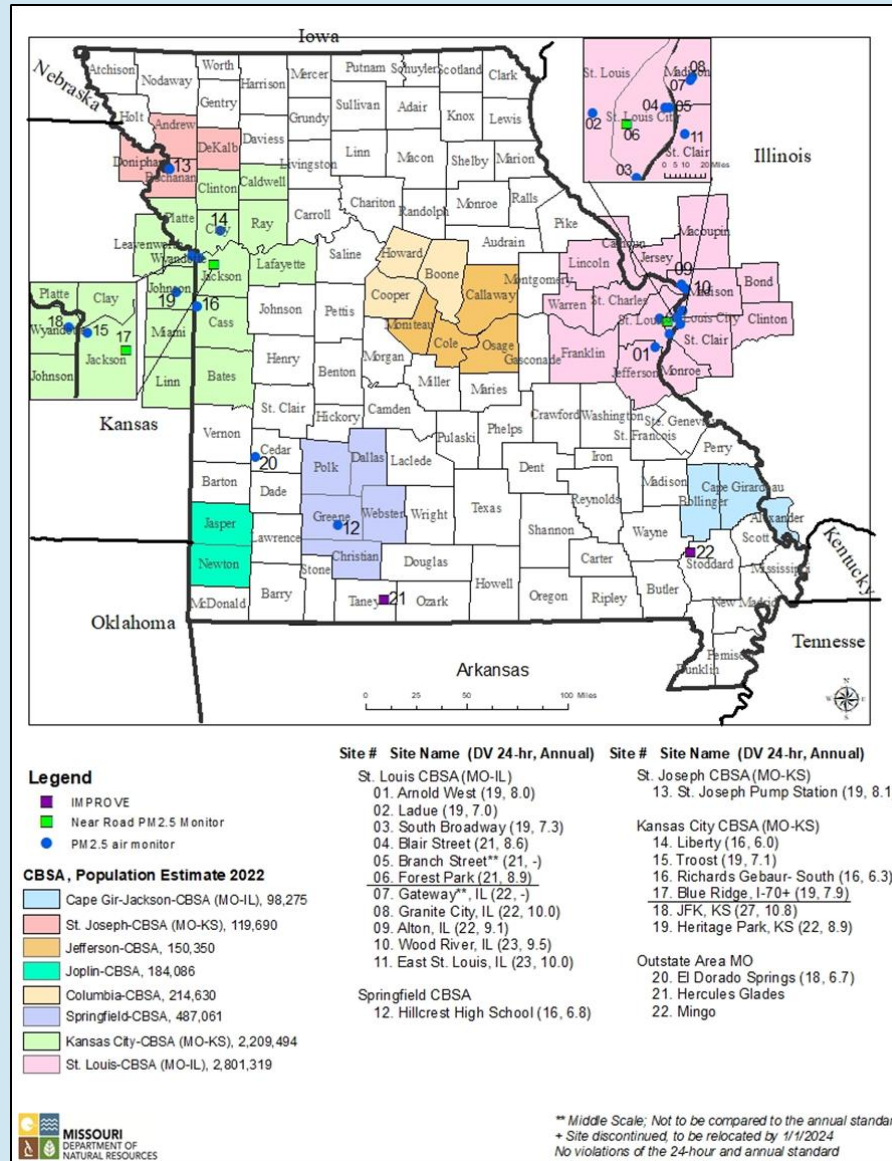
- 24 hour Standard (currently 35 $\mu\text{g}/\text{m}^3$)

potential range: 30 $\mu\text{g}/\text{m}^3$

(only if the annual PM_{2.5} standard is not changed)

- Annual standard at 10 $\mu\text{g}/\text{m}^3$ may affect the Kansas City and St. Louis attainment status

2023 Missouri PM_{2.5} Monitoring Network Design Values



Questions

Missouri Department of Natural Resources
Air Pollution Control Program
1659 E. Elm St.
Jefferson City, MO 65101

573-751-4817

josh.vanderveen@dnr.mo.gov