



Air Emissions Reporting Requirement Rule and Air Toxics

Josh Vander Veen, Air Quality Analysis Section Chief

REGFORM

Missouri Air Compliance Seminar

November 8, 2023

Where Do Air Toxic Emission Estimates Originate and How are They Used?

AirToxScreen 2018 – Basic Steps¹

Compile National Emissions Inventory

Estimate ambient concentrations of air toxics across U.S.

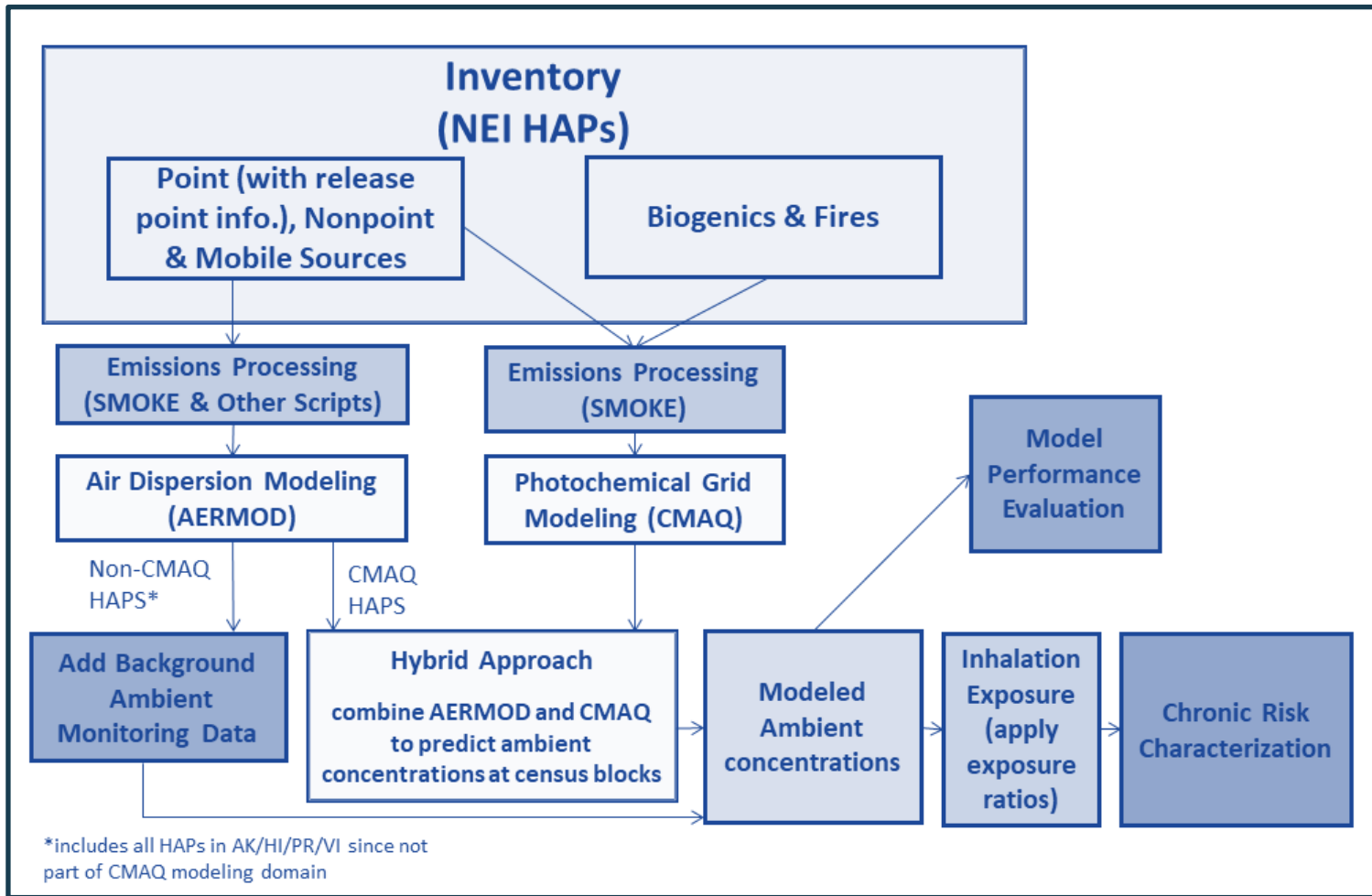
Estimate population exposures

Characterize potential public health risks from inhalation

¹Technical Support Document EPA's Air Toxics Screening Assessment 2018 AirToxScreen TSD; August 2022

<https://www.epa.gov/AirToxScreen>

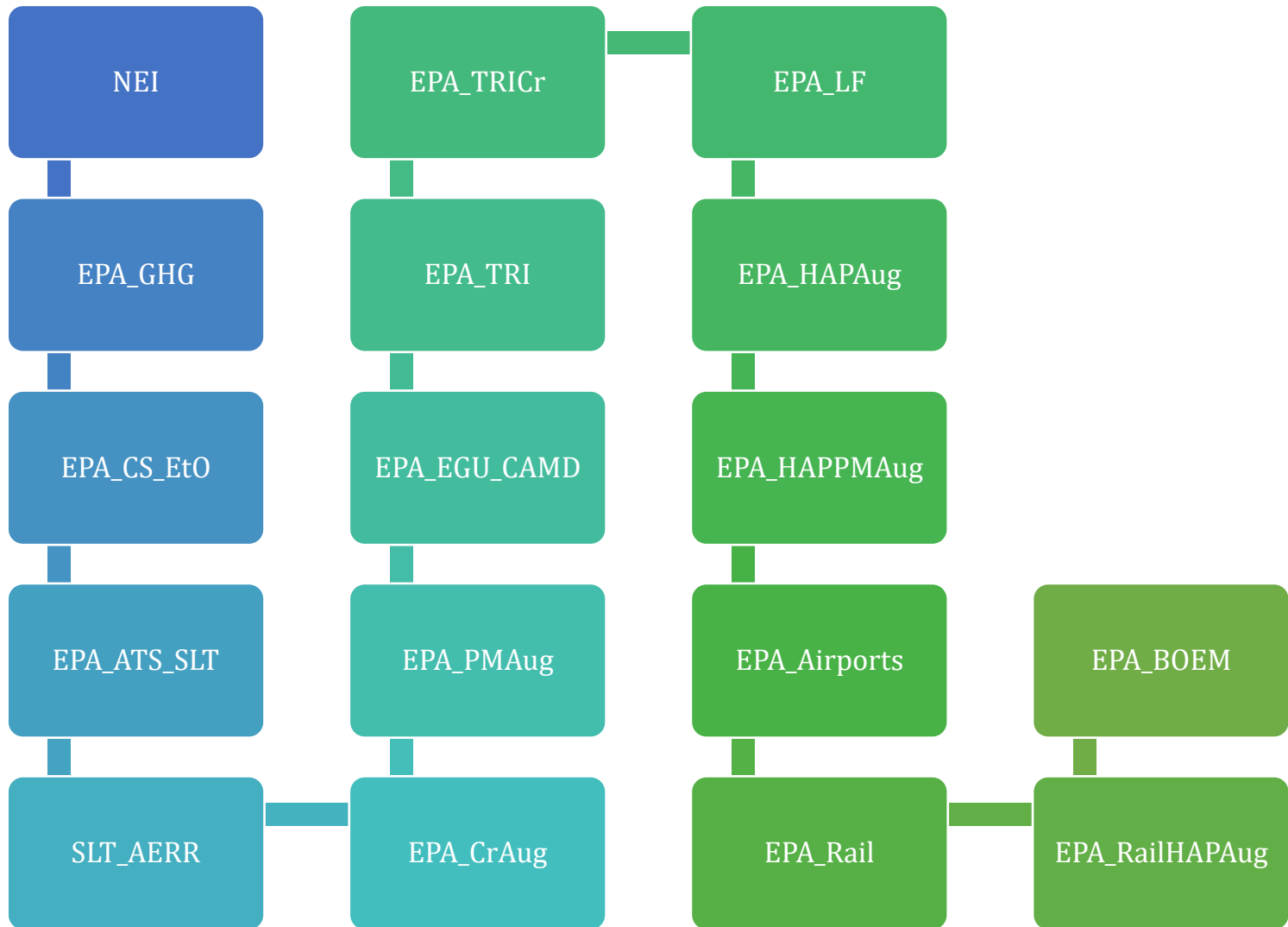
AirToxScreen 2018 – Detailed Steps¹



¹ Technical Support Document EPA's Air Toxics Screening Assessment 2018 AirToxScreen TSD; August 2022

<https://www.epa.gov/AirToxScreen>

2020 National Emissions Inventory Hierarchy



Current Air Emissions Reporting Requirements Rule

Point Sources

40 CFR Part 51 Subpart A Air Emissions Reporting Requirements rule (AERR) requires that states report SO₂, VOC, NO_x, CO, Lead and Lead Compound, Primary PM_{2.5}, Primary PM₁₀, and NH₃ emissions from point sources (Intermediate and Part 70 Operating Permits).

- Hazardous Air Pollutant (HAP) reporting is optional.
- Sources in Missouri without an operating permit are not reported as point sources but are included in the nonpoint inventory.

Proposed Air Emissions Reporting Requirements Rule

General Information

- Proposed amendment to the AERR rule 40 CFR Part 51 Subpart A published on August 9, 2023.
- Comment period ends November 17, 2023.
- Preamble, proposed rule language and preamble, comment information, and additional resources:
<https://www.epa.gov/air-emissions-inventories/air-emissions-reporting-requirements-aerr>
- The proposal:
 - May require changes to the Air Pollution Control Program's emissions reporting rule:
 - Increased reporting frequency for non-major sources.
 - Changes to reporting thresholds.
 - Earlier reporting dates.
 - May further restrict information that can be held confidential.
 - Requires coordinates for each individual emission point reported.
 - Requires increased reporting of performance tests and evaluations to EPA.
 - Requires emission estimates of mobile sources at an installation.

Questions

Missouri Department of Natural Resources
Air Pollution Control Program
1659 E. Elm St.
Jefferson City, MO 65101

573-751-4817

josh.vanderveen@dnr.mo.gov